

Wild Upgrade Manual

Contents

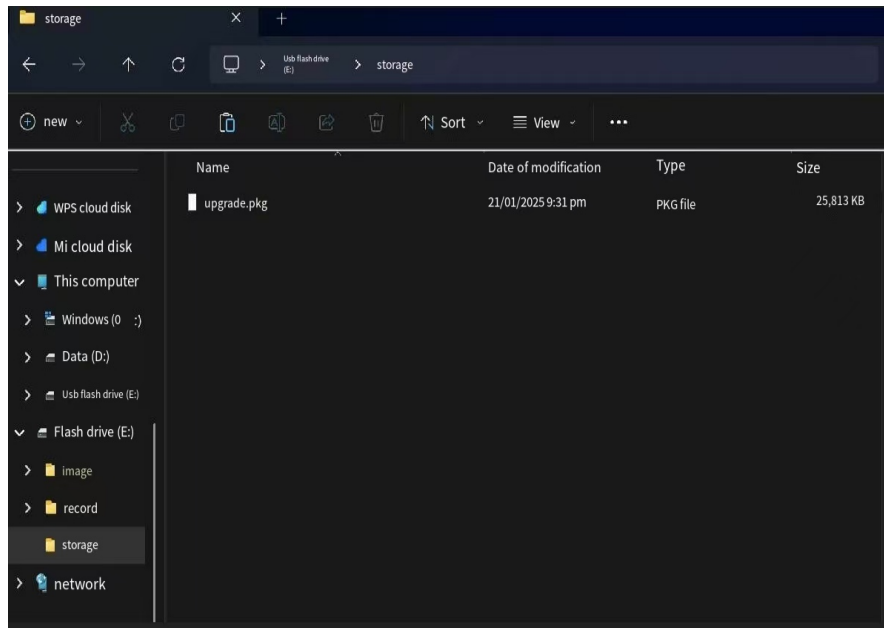
1. Physical connection	1
2. Copy the firmware to the device directory	2
3. Device Upgrade	2
4. Firmware version confirmation	3

1. Physical connection

Please use USB-to-TypeC interface cable to connect the device and computer as shown in the picture below.



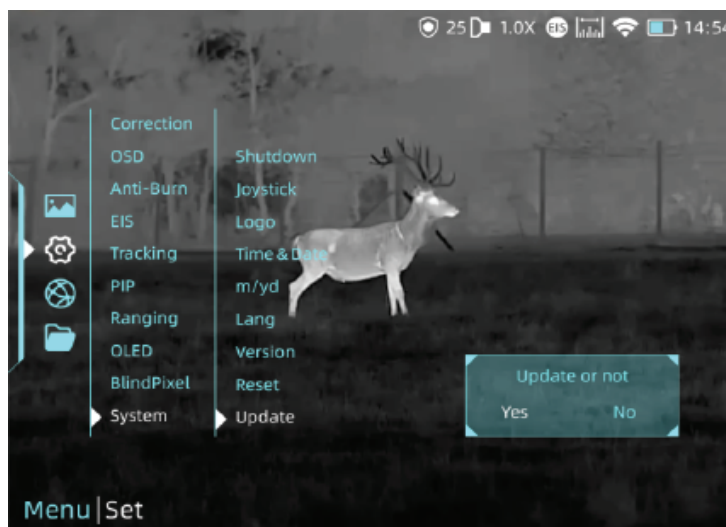
2. Copy the firmware to the device directory

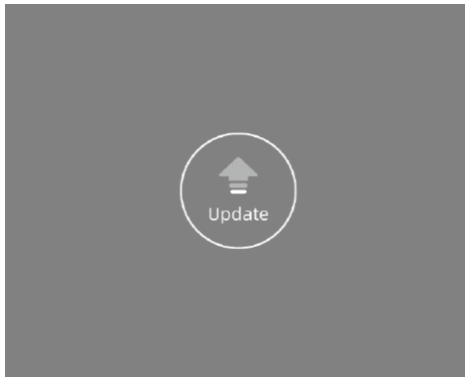


3. Device Upgrade

Upgrade the device from following path:

【Menu】 -> 【Set】 -> 【System】 -> 【Update】





4. Firmware version confirmation

From the below path to check the device version is matched or not.

【Menu】 -> 【Set】 -> 【System】 -> 【Version】

